

MONA OFFSHORE WIND PROJECT

Preliminary Environmental Information Report

Volume 7, annex 21.1: Traffic and Transport Figures



April 2023
Final

Image of an offshore wind farm

Document status

Version	Purpose of document	Authored by	Reviewed by	Approved by	Review date
Rev01	First draft for client	RPS	bpEnBW		24/01/2023
Rev 02	Second draft for client	RPS	bpEnBW		07/02/2023
Rev03	Final	RPS	bpEnBW	bpEnBW	15/03/2023

The report has been prepared for the exclusive use and benefit of our client and solely for the purpose for which it is provided. Unless otherwise agreed in writing by RPS Group Plc, any of its subsidiaries, or a related entity (collectively 'RPS') no part of this report should be reproduced, distributed or communicated to any third party. RPS does not accept any liability if this report is used for an alternative purpose from which it is intended, nor to any third party in respect of this report. The report does not account for any changes relating to the subject matter of the report, or any legislative or regulatory changes that have occurred since the report was produced and that may affect the report.

The report has been prepared using the information provided to RPS by its client, or others on behalf of its client. To the fullest extent permitted by law, RPS shall not be liable for any loss or damage suffered by the client arising from fraud, misrepresentation, withholding of information material relevant to the report or required by RPS, or other default relating to such information, whether on the client's part or that of the other information sources, unless such fraud, misrepresentation, withholding or such other default is evident to RPS without further enquiry. It is expressly stated that no independent verification of any documents or information supplied by the client or others on behalf of the client has been made. The report shall be used for general information only.

Prepared by:

RPS

Prepared for:

Mona Offshore Wind Ltd.

Contents

1 TRANSPORT FIGURES1
1.1 Introduction.....1

Figures

Figure 1.1: Highway network overview.....2
Figure 1.2: Sensitive receptors.....3

Glossary

Term	Meaning
Other key access roads	Roads operated and maintained by the Local Highway Authority
Strategic roads	Roads operated and maintained by Welsh Government

1 TRANSPORT FIGURES

1.1 Introduction

- 1.1.1.1 This Traffic and transport technical report presents the figures used in the traffic baseline characterisation and assessment of the Mona Offshore Wind Project, as set out in volume 3, chapter 21: Traffic and transport of the Preliminary Environmental Information Report (PEIR).
- 1.1.1.2 Figure 1.1 presents the highway network overview, this includes the highway links that have been analysed as part of the traffic and transport chapter (volume 3, chapter 21: Traffic and transport of the PEIR). The highways links have been determined based upon an initial estimate of the likely routing of construction vehicles along the adjacent highway network and the sections of highway (highway links) that form this.
- 1.1.1.3 Figure 1.2 presents the sensitive receptors in the vicinity of the highway links highlighted in Figure 1.1 . Table 21.10 of the traffic and transport chapter (volume 3, chapter 21: Traffic and transport of the PEIR) sets out the definitions of sensitive receptors highlighted in Figure 1.2. The assessment of the environmental impact of traffic incorporates identifying the sensitivity of affected transport routes (presented in annex 21.2: Description of network links and sensitivity of the PEIR), whilst considering the presence and location of sensitive receptors or route users. The sensitive receptors to be considered for assessing the environmental impact of traffic and transport are highlighted in Figure 1.2.

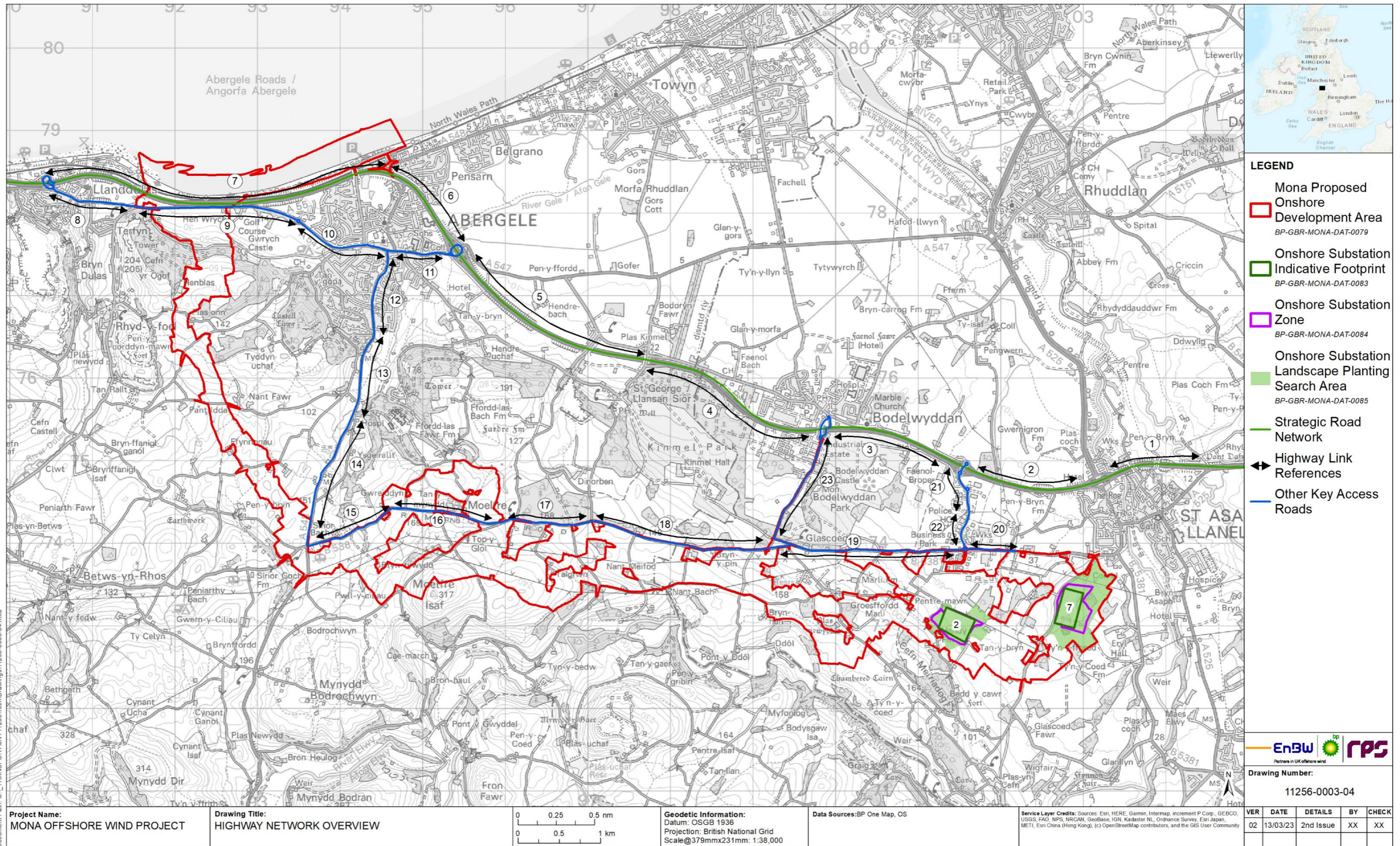


Figure 1.1: Highway network overview

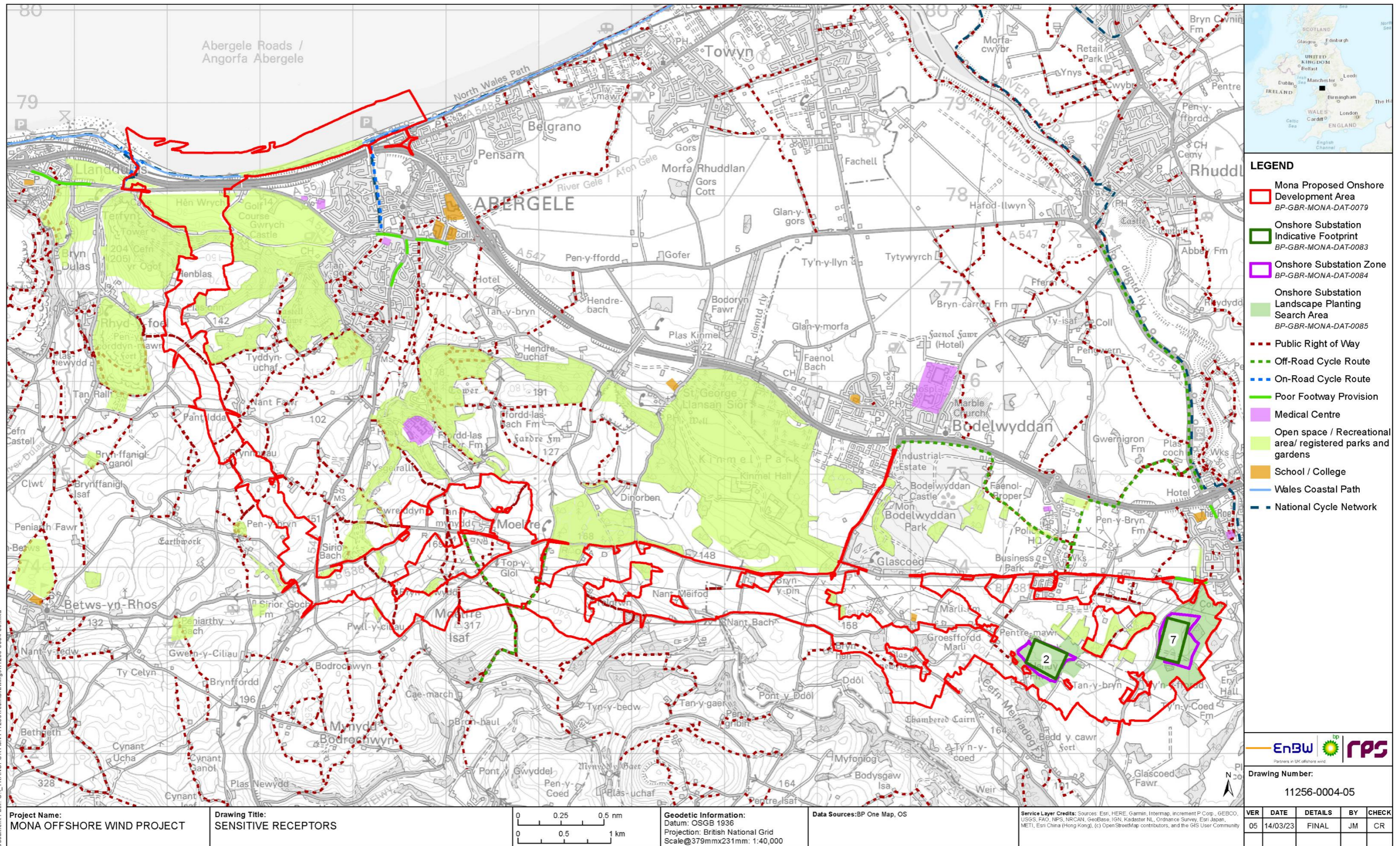


Figure 1.2: Sensitive receptors